



Franklin Art Association

279 East Central Street, PMB #289, Franklin, MA 02038 www.franklinart.org

Volume 38, Number 3

November 2011

Officers:

President

Frank Robertson
(774) 254-6126
frankrobertson@gmail.com

Vice President

Dorothy Downing
(508) 340-5385
dldowning0371@aol.com

Secretary

Kathe Kirchmyer
(508) 533-7061
Kathytomkir@aim.com

Treasurer/Membership

Carol Frieswick
(508) 234-6697
csf@meganet.net

Corresponding Secretary

Hannah Close
(860) 204-1796
FAAsecretary@gmail.com

Committees:

Archives- Karen Pendleton

Publicity- Angela Turner

Refreshments- Bernie McNichols

Scholarship- Tina Guarino

Workshops- Paul Peterson

Website- Dale Hoopingarner

Fundraising- Paul Guarino

Special Venues Chairs:

EMC- Stacey David

Fall Exhibition- Frank Robertson

Spring Exhibit- Frank Robertson

Hawthorne Suites- Lisa Bailey

Hayward Manor- Paul Guarino

Town Hall- Brenda Hutchinson

I hope you are all enjoying our fall weather and nature's colossal array of warm colors. I always wish this season would last longer. Indian Summers are a welcome gift before Jack Frost begins to place his frosty nip on our cheeks and noses. Winter is also a very beautiful season; however, it does put a damper on plein air painting. So winter painting becomes mostly an indoor sport of doing still life paintings or working from photographs. Regardless of the season, I always feel so blessed that I can spend so many hours painting, especially when I can paint with friends.

We are so lucky to have such a positive response from our members to our requests for volunteers to help setup and run the show. We are equally fortunate for the member donations of paintings for the silent auction and scholarship raffle. The donations we are receiving from business sponsors and from individuals are outstanding. These donations will more than offset the show's cost. I also want to thank all those who have distributed our promotional flyers. Lastly, we are extremely fortunate to have such experienced and dedicated chairpersons. Both Kris Occhino and Paula Correia are doing an outstanding job of putting all of the pieces in place that are necessary to have another successful show. My sincere thanks to everyone!

We are always looking for feedback and ideas on how we might improve FAA's value to its members. If you have not already responded to our member survey, please take a few minutes to give us the benefit of your thoughts. The responses we have received thus far indicate a general satisfaction with what we have been doing and a desire to expand on the number and types of our educational offerings. We are also considering group trips and some additional exhibit opportunities.

Speaking of other offerings you may be interested in attending this year's annual International Fine Art Show at the Cyclorama from November 17th to the 20th in Boston. See their web site: <http://fineartboston.com/> for more information. It's a great take!

If you haven't already renewed your membership, please send it in as soon as possible. Also, remember that anyone may attend our meetings, so feel free to bring a friend. The more the merrier.

I am very pleased to say that we will have our holiday party once again at Claire Griffin's home (164 Main St., Franklin). The party is a "pot luck" affair so bring some of those delicious dishes you make and beverages to share with others. The party will be held on December 7th beginning at 6pm in lieu of our regular meeting at the Senior Center. Members are encouraged to donate a personal care item, (shampoo, toothpaste, etc.) in honor of the holiday's, collected items will go to the Franklin Food Bank.

I'm looking forward to seeing you at our November meeting and your artwork at our Fall Show. Until then, take good care, Frank

Meetings take place at the Franklin Senior Center, 10 Daniel McCahill St., Franklin, MA across from St. Mary's church, from 6:30 to ~9pm, the first Wednesday of every month, September through May. Refreshments and socialization are held from 6:30-6:45pm, followed by a short business meeting. A demonstration/lecture or workshop activity follows. Our meetings are open to the public and all are invited to attend.

Calendar of Events

November 2: Ray Andreotti will do a watercolor workshop.

November 5: FAA Member Fall Show - *Colorful Images* at Restaurant 3 in Franklin from 11am - 9pm (see accompanying flier details.)

December 7: Christmas party @ Claire Griffin's home in Franklin. Please bring a pot luck item and personal care donation (to go to the Franklin Food Bank.)

January 4: Photography demo focusing on composition in photography.

March 7: Marla Greenfield will join us for a watercolor demonstration.

April 4: The FAA will host Leif Nelsson for a palette knife demonstration.

Call for Entries

The Post Road Art Center is hosting *Miniature Show 2011* will be accepted **Nov. 21 - Dec. 1st**. Reception Thur. Dec. 8th.

Small Works for Case at Franklin Town Hall

– We are still looking for a few more small art pieces to be placed in the locked, glass case at the Franklin Town Hall.

If you have anything 8 x 10 (frame exterior) or smaller, please bring to the November meeting and give to Brenda Hutchinson or contact her at 508-528-4751

The Rhode Island Watercolor Society is seeking artists for its upcoming *Open Juried Competition: Winter* which celebrates the love of winter with the love of art. Works selected for the show will on display and for sale from November 27 – December 23, 2011 at the Society's Gallery, located at the J. C. Potter Casino (Boat House) in Slater Memorial Park, Armistice Boulevard, Pawtucket, RI. Gallery hours are Tuesday through Saturday from 10 AM to 4 PM and Sunday from 1 to 5 PM. For details visit www.riws.org

Hawthorn Suites. Deadline: Open. FAA has an exclusive partnership with the Hawthorn Suites to hang artwork in their first

floor lobby and eating area. Each FAA artist that signs up would need about 12 paintings to be placed on fixed hooks. The art is changed every three months. Slots are now being filled for the 2012 calendar year. Artists can choose to share the space with another FAA member to reduce the amount of paintings or the amount of time needed for display. Please contact Lisa G. Bailey at 508-553-9119 or lgb@lisagbailey.com for info or questions. First time artists will get priority placement.

Workshops/Classes/ Events/Opportunities

The Westboro Gallery is hosting *Artful Hands: Two Craftsman Making Art* with work by Carol Macagni and Katia Fechonis, show runs through Nov. 6th.

The Hopkinton Cultural Council is hosting their annual Holiday Boutique November 4, 3:00 pm-7:00 pm, November 5, 10:00 am-4:00 pm, November 6, 12:00-3:00 pm, more information at www.caahop.org

Please note that there are additional opportunities at the end of this newsletter as well!

The Franklin Art Association presents...

Colorful Images

Fall Art Show & Sale

November 5, 2011, 11:00^{am} to 9:00^{pm}

Restaurant 3

*461 W Central St.
Franklin, MA*



Join us to celebrate fall and our member artist's recent work.

- Exhibit and sale of juried paintings and photographs
- Bin sales of original art work and prints
- Silent auction of small works
- Scholarship art raffle of donated works

Admission is Free and open to the public

Appetizers will be served and catered by Restaurant 3

A cash bar is available



We look forward to seeing you

Franklin Art Association
279 East Central St. PMB #289
Franklin, MA 02038

Members' News

Jerry Aissis, Kris Occhino and Frank Robertson will be showing along with RIWS members: Robin Beck with and Dave Locarno. Reception: Sunday, Nov. 6 from 1-4pm Refreshments and live music. (Postcard right)

Gail Eckberg has 4 small works juried into

Deer Isle, Maine, Art Association's *Annual Small Works Exhibit*, continuing until the December holidays. Her art can be seen in Wellesley at the Community Center Building. She has 2 art pieces juried into CAA Annual Juried Exhibit *On The Edge* in Hopkinton. Their *Red Carpet* gala auction event, to benefit the expansion of CAA's location, will feature Eckberg's award winning *Cone Flower*, watermedia. And once again, Gail's recent open studio, *Galleria of Design*, was successful with attendance and great sales.

Elizabeth Havens will have a one person art show on November 19th from 9am-4pm. at Brierly Pond Condominium's Club House, I Horne Way, Millbury, MA. There will be some fabric art as well.

Bill Noble won Honorable Mention, and his painting was used on the program cover, of the *Earth Wind And Fire Exhibition* at the Cape Cod Art Association. Bill also finished twelve weeks of study with Robert K Roark, an internationally recognized artist.

Marjorie Sardella just completed an assignment as an event photographer, for a Scotch whisky tasting which took place both while cruising inner Boston Harbor and the Charles River, and after docking, the event continued at a private roof-top tasting at a local harbor-side restaurant.

Rebecca Skinner has two upcoming shows: Art Gallery at Patriot Place *Focal Point – Though the Lenses of Six Photographers*. Six RISD photographers will have work on display November 4th thru 6th. For more information and gallery hours visit: <http://artgalleryatpatriotplace.blogspot.com/> And F2.8 Group presents *Let the Light In*. RISD graduates & current students will have a photography exhibit. The exhibit runs thru the month of November. Opening reception: November 12, 2:00-4:00pm http://library.virtualnorfolk.org/public_documents/index, Norfolk Public Library located at 139 Main Street, Norfolk, MA 02056.

Visions Five A FIVE PERSON SHOW



November 6 - November 22, 2011

October meeting with demonstrator Andrew Alexander-Bell



Fall Plein Air Workshop with Maris Platais



When ordering supplies for those fall paintings—Dick Blick will donate a portion of the proceeds from each order to the FAA as long as orders are made by clicking through” to the Dick Blick website from the FAA homepage. www.franklinart.org

Editor’s Note: As always, we depend on you, our members, to provide information for your newsletter. So I thank you in advance for providing information concerning coming events, exhibitions, shows, etc. ~Hannah Close

The Franklin Art Association is funded in part by the Franklin Cultural Council, which is supported by the Massachusetts Cultural Council, a state agency.



Franklin Art Association Membership E-Mail Survey

Please indicate your level of satisfaction with the following aspects of our association by placing an "X" in tables below. Feel free to add any additional comments or suggestions below.

Thanks for providing your inputs.

MEMBER BENEFITS:

	OK / Good?	Want More?
Communications		
Social Events		
Educational Events		
Exhibit Events		
Group Trips		

ASSOCIATION MANAGEMENT:

	OK / Good?	Want More?
Budgeting & Fundraising		
Promotion		
Membership Stability / Growth		

COMMUNITY INVOLVEMENT:

	OK / Good?	Want More?
Downtown Partnership Involvement		
Support of Local Businesses		
H.S. Scholarship(s)		
Cooperation with other Organizations		

COMMENTS / SUGGESTIONS:



Artful, Abundant Calligraphy

a selection of work by

Claire Carney Griffin

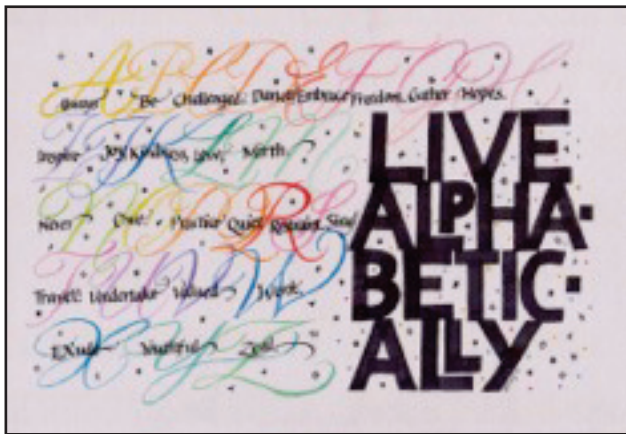
October 6 - November 14, 2011

at the

Franklin Municipal Building

East Central Street (Route 140)

Franklin, Massachusetts

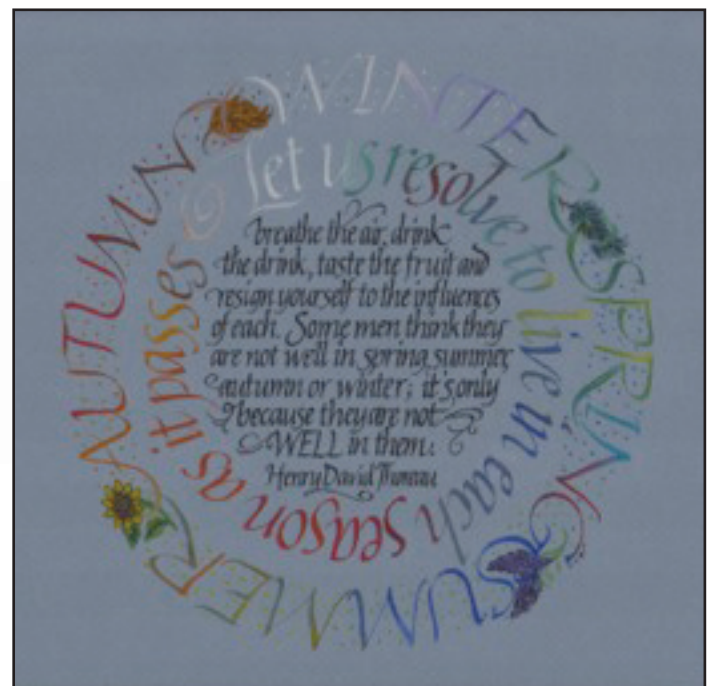


Griffin Ink

S T U D I O
calligraphy • design • fine art

Claire Carney Griffin

164 Main Street • Franklin, MA 02038
www.griffinink.com



Artists in Action

MONTHLY DEMONSTRATION AT THE NEXT DOOR GALLERY

GET TO KNOW THE PALETTE KNIFE TECHNIQUES IN OILS

November 2011 Featured Artist: Charles Guay

On Thursday November 10, 2011
from 7:00 to 9:00 p.m.

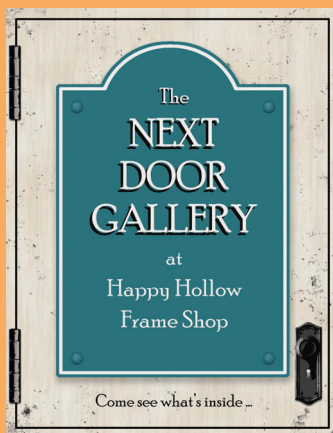
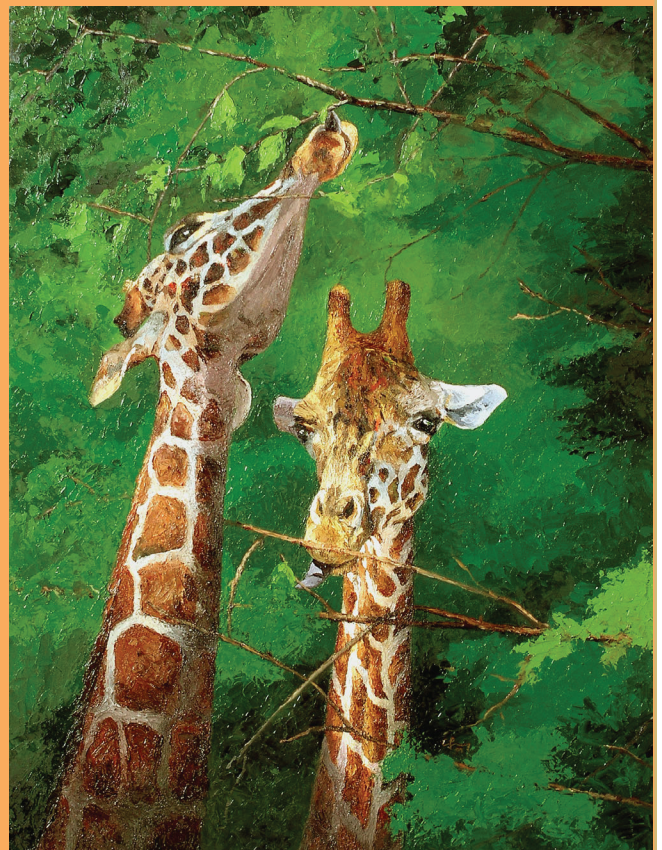
The Next Door Gallery,
at Happy Hollow Frame Shop
250 North Main Street
in Mansfield, MA

will feature a demonstration
by Charles Guay of Taunton.

Charles will demonstrate his skill
in using the palette knife.

Join us for this free demo
which is open to the public.

SPACE IS LIMITED. RSVP by calling
the Next Door Gallery at 508-339-1234.



The Next Door Gallery
at Happy Hollow Frame Shop
250 North Main Street
Mansfield, MA 02048
508-339-1234

The Business of Art



Want to make the business of your art more profitable? Then join us for a free, interactive workshop presented by **Melinda Ailes**, Regional Director and Business Advisor, **Massachusetts Small Business Development Network**.

We'll discuss:

- ♦ **Marketing**
- ♦ **Sales**
- ♦ **Pricing**
- ♦ **Budgeting**
- ♦ **Business plans**

Date: Tuesday, December 13, 2011

Time: 3:00 pm - 5:00 pm

Location: 131 Copeland Drive, Mansfield, MA

Please visit www.harboroneu.com and click on "Classes" to register and view the list of upcoming classes & seminars. If you have any questions please email info@harboroneu.com or call 508-895-1300. Seating is limited.



Duxbury Art Complex Museum

189 Alden Street

Duxbury, MA 02331

www.artcomplex.org

781-934-6634

Hours: 1-4 Wed. through Sunday - Free admission

"Complex Conversations" - Evocative forms suggest variable narratives
in the paintings of Jane Filer, **Susan Swinand** and Ed Trejo.



"Submerging" 48"x48", acrylic on canvas, Susan Swinand www.swinand.com

October 9 through December 4, 2011

Opening Reception: Sunday, October 16, 1:30 - 3:30