



# Franklin Art Association

279 East Central Street, PMB #289, Franklin, MA 02038 www.franklinart.org

Volume 36, Number 3

October 2009

## Officers:

### President

Susan Sheridan  
(508) 533-1917  
suesheridan@comcast.net

### Vice President

Dorothy Downing  
(508) 340-5385  
ddowning0371@aol.com

### Secretary

Richard Cook  
(508) 528-3497  
riparco@aol.com

### Treasurer/Membership

Carol Frieswick  
(508) 234-6697  
csf@meganet.net

### Corresponding Secretary

Hannah Close  
(860) 204-1796  
FAAsecretary@gmail.com

## Committees:

### Scholarship

Joan Callahan

### Workshops

Paul Peterson

### Fall Exhibition

Dick Fotland, Paul  
Peterson, Jean White

### EMC Gallery Coordinator

Stacey David

### Archives

Karen Pendleton

### Publicity

Stacey David

### Refreshments

Bernie McNichols

### Website

Lynne Fitzpatrick

### Facilities

Shelly Eager

Dear Members and Friends,

First, I'd like to thank you for electing me to be your president for the 2009-2010 season. All committee positions are now filled, and lots of work has already been done to make this another terrific season.

There are many hours spent behind the scenes each and every month to make our programs and events successful, to handle the financial reports and filings, and to bring awareness to the community of our upcoming events. On this latter subject, I would like to especially thank Anne McNevin for handling our ongoing publicity for the past three years, and thank Stacey David for volunteering to take this task over.

Special thanks also to Carol Frieswick and Dot Downing who coordinated the FAA's presence at the Harvest Festival last Sunday. It was a beautiful day and a very well attended event that gave good exposure to our organization. There were a number of folks doing plein air painting, and the great artwork on exhibit generated some sales as well.

With the autumn leaves turning color, we now turn our attention to our fall show on November 7th and 8th. It's going to be a terrific event! Don't forget to bring your silent auction paintings to the next meeting, and sign up for a committee if you haven't already.

See you then,  
Sue Sheridan

Meetings take place at the Franklin Senior Center, 10 Daniel McCahill St., Franklin, MA across from St. Mary's church, from 6:30 to approximately 9pm, the first Wednesday of every month, September through May.

Refreshments and socialization are help from 6:30-6:45pm, followed by a short business meeting. A demonstration/lecture or workshop activity follows. Our meetings are open to the public and all are invited to attend.

# Calendar of Events

## October 7th

David Curtis, an extremely well known North Shore Artist, will demonstrate in oils. See website [www.davidpcurtis.com](http://www.davidpcurtis.com). (*Garden Sleep* right)

## November 4th

Maris Platais, who has been painting for 60 years, will really impress the audience with his acrylic landscape paintings.

## November 7th & 8th

Fall FAA Showcase co-chaired by Paul Peterson, Dick Fotland and Jean White to be held at the Adirondack Club in Franklin.

## December Holiday Party

Claire Griffin has graciously offered to host this event for a second year in a row.



## Membership List:

Per the request of the membership, the Franklin Art Association Membership list will be provided with the November Newsletter. This list will include members names, addresses, phone numbers, email and web addresses. If you would prefer not to have this information released to the membership please contact [FAAsecretary@gmail.com](mailto:FAAsecretary@gmail.com).

## FAA Membership Renewal:

Don't forget to renew your FAA membership to take advantage of all these great programs! Members are strongly encouraged to mail their application in to the FAA PO Box, or bring a completed renewal form to the October meeting.

**Membership renewals must be received by Oct. 25th to maintain your newsletter subscription.**

Application available online at [www.franklinart.org](http://www.franklinart.org) or as a pdf. accompanying this newsletter.



Artist and teacher William Griffith entertains and informs FAA members at the Sept. meeting with a landscape demo. (left)

# Member's News

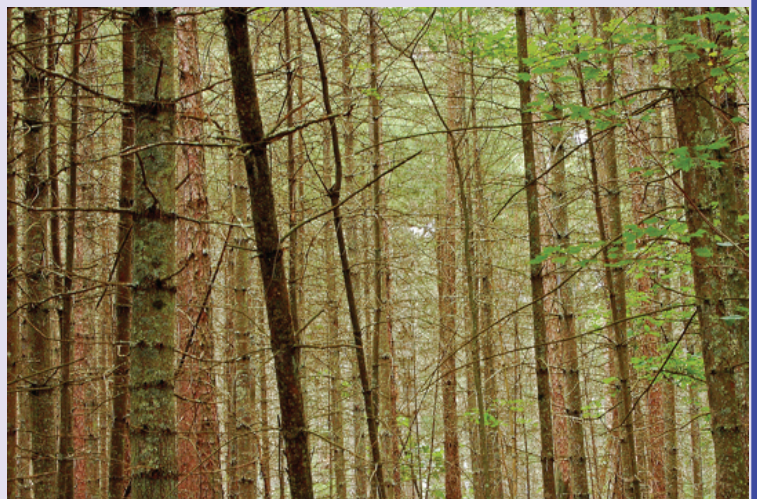
Congratulations to the following FAA members who were juried into the 2009 National Watermedia Competition at the Rhode Island Watercolor Society: **Jerry Aissis, Lisa Bailey, Daydre Hamilton, Kris Occhino, Frank Robinson, and Sue Sheridan.** Opening Reception October 4, 1-4 pm. The show runs from October 4 to October 29, 2009 at the Rhode Island Watercolor Society at Slater Memorial Park in Pawtucket, RI. [www.riws.org](http://www.riws.org)

**Blackstone Valley Plein Air Artists** (many of whom are also FAA members) have been painting plein-air all season to prepare for an upcoming show. They are painting their impression of the town of Whitinsville, but the show will also include many other local Valley scenes. The opening wine and cheese reception will be October 2nd from 5pm to 8pm. The gallery is located at 54 Douglas Rd., housed in a recently renovated foundry shop of the Whitin Machine Works. The show will continue all month to coincide with other cultural area events. It is being supported by the Northbridge cultural council and Alternatives of Whitinsville. Please come join them at the opening.

**Jean Blake White, Sue Sheridan, and Gail Eckberg** had work juried into the miniature art exhibit at the Post Road Arts Center which runs until Sept 30. [www.postroadartcenter.com](http://www.postroadartcenter.com)

**Lisa G Bailey** received first place in watercolors for her painting *Going Bananas* at the Hopedale Day in the Park Juried Art Show held on September 13, 2009. Lisa will be participating in the Framingham Artists' Guild Member show at Premier Image Gallery Sept. 10 - Oct. 29. The artist opening is on September 25th. In addition Lisa G. Bailey, Trish Marcaccio, and Christine Tarter will be having a presentation of their artwork at the Rhode Island Watercolor Society Art Gallery Nov 1 - 19, 2009. Lisa G. Bailey will be showcasing 20 watercolor paintings executed in her new style *Color Weave*. Opening reception with the artists is on Sunday, Nov. 1, 2009 from 1 - 4 pm. It is free and open to the public. Located in Slater Memorial Park in the J.C. Potter Casino Building, on Amistice Boulevard, Pawtucket, RI 02861. Gallery hours: Sun 1 - 5 pm, Tues. thru Sat 10am - 4pm, and closed Mondays. [www.riws.org](http://www.riws.org) or 401-726-1876.

**Karen Callan** is taking part in 12 person group show during the month of October titled *Hues of Light: Expressions in Landscape Photography*, the show runs Sept. 30-Oct. 31. Artists' Reception to be held Sun., Oct. 25, 2-4 p.m at the Cranston Public Library, 140 Sockanosset Cross Rd, Cranston, RI. In addition the same work that was hanging in the Hawthorne Suites gallery will now be hanging in the Community Gallery at the Attleboro Arts Museum for the month of October. (See *Fisherville Forest* right)



# Member's News Cont...

**Shelly Eager** has a solo show of new works running at the Preservation Framers Gallery 16 North Washington St. N. Attleboro, MA, Oct. 1- 31st. A wine and cheese reception will be held Oct. 3rd 7-10pm.

**Gail Eckberg** was awarded second place in watercolor in the 2009 Commonwealth Holiday Art Exhibit. Awards ceremony presentation and luncheon will be hosted by State Secretary William F. Galvin at the Commonwealth Museum Building, Boston, on November 9. Work was submitted by artists throughout the State.

**Daydre Hamilton** had two paintings accepted into the Rhode Island Watercolor Society show, *Paint RI* running Oct. 13-30.

**Marilyn Healey** will be exhibiting her work along with other local artists at The Next Door Gallery on North Main Street in Mansfield, MA for the months of Sept., Oct. and Nov. The reception will be September 26 from 7:00 to 9:00 p.m. The gallery hours are Monday thru Friday 10:00 to 5:00, and Sat., 10:00 to 3:00.

**Bill Noble** had two pieces accepted into the Falmouth Artist Guild Fall Juried Show. There were 249 entries and 74 accepted. Bill had an Encaustic and an Oil accepted. Bill was invited to join the South Cape Artists, a group of eleven regionally and Nationally Known artists. They had a show over Labor Day in New Seabury and will be opening a permanent gallery in August of 2010. In addition Bill will have a one man show at the Preservation Framers in North Attleboro in December 2009.

**Rebecca Skinner** will be exhibiting her work in *Take a Closer Look Macro & Close-Up* Photography Exhibit. Please come for a fresh and innovative showing of our world close up! Opening Reception Sunday, October 18th 2pm-4pm. Location: Warwick Public Library, 600 Sandy Lane, Warwick, RI 02889 Phone: 401-739-5440. Exhibit on display September 19th thru October 31st 2009. This exhibit consists of work from 9 photographers all of which attended a close-up photography class taught by Shane Gutierrez, a Rhode Island School of Design instructor. [www.shanephotography.com](http://www.shanephotography.com).

**Aivars Zandbergs** spent the majority of the summer painting en Plein Air in his native Latvia. He had a piece accepted into the Jurmala Museum Exhibit *Marina 2009. Baltic Waves* acrylic 20" x 39", and was invited to have a one man exhibit in 2011. He attended a seven day Plein-Air in the town of Saulkrasti (Sunny Shore) with twelve local artists. In July he and local artist J. Anmanis spent nine days at Krimulda Castle, room and board included for a donation of one painting. This concluded with a two-man exhibit, each in its own hall, and a reception for about 300 guests. The exhibit ran from July 23rd –Aug 24th, 2009. He also won the Judges Choice Award in the Catskills 62 Annual *Twilight Park Art Exhibit*. A small exhibit will run until Oct 15th when he will return to attend the Annual American-Latvian Artist Association seminar.



## *Franklin Art Association*

*38th Annual*

# *Fall Into Art*

*Exhibit & Sale*

**November 7th & 8th, 2009**

**Saturday 11-8 p.m. & Sunday 11-4 p.m.**

**Located & Hosted by: The Adirondack Club**

**800 Chestnut Street, Franklin, MA 02038**

*Reception*

*Saturday 6-8 p.m.*

**3**

*Music, Drinks & Appetizers from Restaurant "3"*



## Fall Show Committee Report:

We have volunteers but need more! Please contact Paul Guarino to be on the Sponsorship Committee at pauljm1@comcast.net. There will be sign-up sheets for volunteers, food and bins at the next meeting. One big need we still have is for raffle donations - paintings, photos, art books - since we need a big raffle ticket sale this year. There are already some very nice raffle donations, but not enough. Do let us know if you are willing to donate to the raffle.

Also remember that the silent auction needs your help! 5 x 7 paintings, photos - paper was supplied at the Sept. show and we ask members to bring in their silent auction works to the Oct. meeting.

Contact Gail Eckberg at geckberg@aol.com if you have not yet signed up to have your art bin at the upcoming November exhibit. Please include your name, e-mail address, and telephone number in your email to Gail in order to reserved space. All bin art work must be clean, and labeled with artist name/initials and price.

Joan Callahan will have packets of 25 tickets, with instructions, for members to purchase at the Oct. meeting. Tickets sell for \$1 each, or five for \$4. If purchased all at once, in advance, the total cost is \$20. Each person who buys tickets in advance must put their name on a list which Joan will supply. Tickets can be mailed to those not in attendance at the Oct. meeting. Any unsold tickets must be returned on or before the day of the raffle (Sun. Nov. 8th), along with the money collected and completed stubs for sold tickets.

And most important of all... enter the show! See accompanying .pdf for the application form.

# Call for Entries

**Norfolk Cultural Council** has an opening in the Norfolk Library exhibit room for the month of November 2009. Local artists interested in exhibiting their work should contact [janyceconklin@comcast.net](mailto:janyceconklin@comcast.net) for scheduling details. They are also looking for artist to display their work at the Norfolk Library Meeting room beginning in October 2010. Anyone who is interested please contact: [janyceconklin@comcast.net](mailto:janyceconklin@comcast.net) or 508-528-8485.

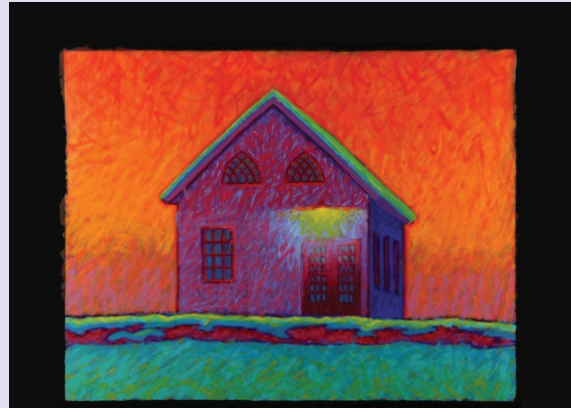
**The Village Artist's Collaborative** is hosting *Christmas Arts Show Dec. 12th* 10-4 at the Village Artisans Retail Shop in N. Attleboro. 8x6' booth rental is \$40. See accompanying .pdf application.

**Hawthorn Suites.** Deadline: Open. The FAA has an exclusive partnership with the Hawthorn Suites to hang artwork in their first floor lobby and eating area. Each artist that signs up would need about 12 paintings to be placed on fixed hooks. The art is changed every three months. Slots are now being filled for the 2010 calendar year. Artists can choose to share the space. Please contact Lisa G. Bailey at 508-553-9119 or [lgb@lisagbailey.com](mailto:lgb@lisagbailey.com).

# Workshops/Classes/ Events/Opportunities

**Lisa G. Bailey** will continue to teach drawing and painting in her Franklin home this school year. Open Registration for private or group classes going on now for ages eight thru adult. You can join at any time. Visit her website at [www.LisaGBailey.com](http://www.LisaGBailey.com) and click on Art Classes for more information or call Lisa at 508-553-9119 or e-mail her at [info@LisaGBailey.com](mailto:info@LisaGBailey.com)

**Crashing Boar Studio** of artist Gigi Horr Liverant (mother of FAA member Hannah Close) will be holding an open studio weekend in conjunction with the New Haven, CT City-Wide Open Studios Event Oct. 3rd & 4th [www.cwos.org](http://www.cwos.org). Crashing Boar Studio is located at 43 School Rd. Colchester, CT [www.gigiliverant.com](http://www.gigiliverant.com).



## How long have you been a FAA member?

If you have been a member for 25 years or more contact [FAAsecretary@hotmail.com](mailto:FAAsecretary@hotmail.com) or consult one of the FAA officers.

**Editor's Note:** As always, we depend on you, our members, to provide information for your newsletter. So I thank you in advance for providing information concerning coming events, exhibitions, shows, etc. ~Hannah Close

This newsletter is funded in part by the Local Cultural Councils

