



# Franklin Art Association

279 East Central Street, PMB #289, Franklin, MA 02038 [www.franklinart.org](http://www.franklinart.org)

Volume 35, Number 6

February 2009

## Officers

President

**Stacey David**

(508) 440-5299

[staceydavid@yahoo.com](mailto:staceydavid@yahoo.com)

Vice President

**Catherine Rogozyn**

(508) 883-5808

[crogozyn@yahoo.com](mailto:crogozyn@yahoo.com)

Secretary

**William Wallhausser**

(508) 528-4157

[bwallhausser@kta.com](mailto:bwallhausser@kta.com)

Treasurer/Membership

**Carol Frieswick**

(508) 234-6697

[BAF@meganet.net](mailto:BAF@meganet.net)

Corresponding Secretary

**Hannah Close**

(860) 204-2796

[FAAsecretary@gmail.com](mailto:FAAsecretary@gmail.com)

## Committees

Scholarship

**Joan Callahan**

Workshops

**Paul Peterson**

Spring Exhibition

**Stacey David**

Archives

**Karen Pendleton**

Publicity

**Anne McNevin**

Refreshments

**Bernie McNichols**

Website

**Lynne Fitzpatrick**

Dear Fellow Artists,

I'm very excited about this month's demonstration! FAA member Vic Pisini will be leading us in a hands-on portrait workshop. Bring your favorite medium, and Vic will take us step-by-step through the process of creating a portrait. Don't miss it!

In show news, make sure to check out the attached prospectus for the upcoming *Spring Brings New Hope* juried exhibition at Jane's Frames. I encourage you all to participate!

I'm also pleased to announce the plans for the FAA spring show. Since no one has stepped up to the plate to be show chair, I have decided to take this on myself (though I'll need your help, so please volunteer!) I have contracted with Barnes & Noble to hold the show at their store in Bellingham. This will be a lot less work than our fall show, since we will be using primarily their wall space and facilities, which is great. The bad news is that, due to their business license, we cannot have direct sales at the show (including bins), but the good news is that they are doing this as part of their Arts & Literature fundraising program, so the FAA will receive 10-20% of the Barnes & Noble sales made the opening day of the show! According to the B&N community relations manager, many organizations make several thousand dollars doing this. The show will run May 1-3, 2009. The first show committee meeting will be Thursday, Feb 19, at the Bellingham Library community room from 7:00-8:00 pm. A list of open committees can be found later in this newsletter. Please come and help!

I look forward to seeing you all next Thursday.

Regards,

Stacey David

FAA President

Meetings take place at the Franklin Senior Center, 10 Daniel McCahill St., Franklin, MA, across from St. Mary's church, from 6:30pm to approximately 9pm, the first Thursday of every month September through June (with exception of holiday party and end of year cookout).

Refreshments and socializing are held from 6:30pm to 7:00pm, followed by a short business meeting. A demonstration/lecture or workshop activity follows.

# Calendar of Events

## February 5

Vic Pisini will be critiquing a portrait session. **A model will be present and all members are encouraged to bring any medium they want to use during this open studio session!**

## March 5

Lisa Granata will provide a demonstration/workshop on the old world technique of charcoal imaging. Those who attend are encouraged to bring charcoal paper and erasers to take part in this ancient art method.

## April 2

William Bartlett will join us for oil painting demonstration.

## Spring Show at Barnes & Noble

As always, we need a number of volunteers to make the spring show a reality. Due to the nature of the agreement with Barnes & Noble, we actually have less work to do than we did for the fall show! The following committees **do** need volunteers; please call or email me if you would like to participate: stacey-david@yahoo.com or 508-440-5299. The first show meeting will be Thursday Feb. 19 at 7pm at the Bellingham Library.

1. **Exhibit Registration Committee:** Person(s) to accept & log registrations, create judge's list, catalog, and artwork labels
2. **Graphic Design Committee:** to create ads, fliers, postcards, signs, website, etc.
3. **Marketing Distribution Committee:** to distribute fliers, postcards, etc. both in person and by mail
4. **Panel Committee:** order panels as needed, transport those we have, set them up, etc. early morning of May 1
5. **Check In/Check Out Committee:** accept & organize work at Bellingham Library, then transport to B&N
6. **Hanging Committee**
7. **Awards Committee**
8. **Music Committee**



**Reminder!** When ordering supplies for those winter vacations— Dick Blick will donate a portion of the proceeds from each order to the Franklin Art Association as long as orders are made by “clicking through” to the Dick Blick website from the Franklin Art Association homepage.

## Juried Show at Jane's Frames in Franklin

The FAA is pleased to announce a partnership with Jane's Frames ([www.janesframes.com](http://www.janesframes.com)) for a juried show running March 19th through April 2nd. The theme of the show will be "Spring Brings Hope," submissions should reflect the theme, though a range of interpretations will be accepted. Works must be 32 x 38" or smaller and completed within the last 2 years. Sculpture (12 x12") will also be accepted. Submission fee of \$20 per 2 pieces to the FAA is required with application. Prizes will be awarded—1st place: free framing up to \$500, 2nd place: free framing up to \$150. Carol Frieswick will be chairing this exhibition. See accompanying email attachment for additional information and application.

### Call for Entries

Franklin Art Association is a member of Art Opportunities Monthly whose newsletter posts local and national listings. Our newsletter includes a sampling of local opportunities, the complete listings are included as a separate attachment, or for more consult the link [www.artopportunitiesmonthly.com](http://www.artopportunitiesmonthly.com)

**Post Road Art Center** will be having a *Show of Hearts* fundraiser for breast cancer in February. Please let them know if you would like to volunteer to help out, and start thinking of your 8x10" or smaller ideas for submissions.

Then in March they will have an OPEN group juried show. 1 Boston Post Road East Marlborough, MA 01752 [www.postroadartcenter.com](http://www.postroadartcenter.com)

**Winter Frolic Juried Art Show, Deadline: Feb 4** sponsored by the Norfolk Cultural Council, at the Norfolk library Community Room, will be held Feb. 7-28<sup>th</sup>. One piece of artwork per person (140 total), oil, acrylic, pastel, watercolor & mixed media (28x32" max) produced in the last three years will be accepted. Work must be framed, no saw tooth hangers or clip frames. Entry fee is \$20 (payable to Norfolk Cultural Council). Delivery date Feb. 4, 3-6 pm, pick-up Feb. 28 3-6pm, prizes - 1st, 2nd place in each category and Best in Show, reception Feb. 7, 1-4pm with live entertainment. Entry forms available at Main Library Desk after Jan. 15 (or see the Excel attachment *Frolic\_Labels.xls*). Mail entries to: Norfolk Cultural Council, 1 Liberty Lane, Norfolk,

MA 02056

**RIWS Deadline: Feb. 8** *All Creatures Great and Small* water-based media competition celebrates the love of animals. Works selected for the show will on display and for sale from Feb. 15 – March 5 at the Society's Gallery, J. C. Potter Casino (Boat House) in Slater Memorial Park, Armistice Boulevard, Pawtucket, RI. Hours are Tues through Sat from 10 to 4 and Sun from 1 to 5pm. Cash awards and ribbons will be awarded. Work must not have been previously exhibited in RIWS competitions, must have been completed within the last 3 years. Hand delivery of works for entry submission is Jan 26- Feb 8 at the Society's Gallery. Opening reception on Feb 15th, a portion of the show proceeds will be donated to the RISPCA. For more information and a show prospectus, please visit the Society's web site at [www.riws.org](http://www.riws.org) or Mary Lou Moore at (401) 726-1876 and [Mary-lou.moore@cox.net](mailto:Marylou.moore@cox.net).

**[N] Media: PA PR DR SC PH CR MM. Deadline: Feb 9** ~ *Women only. International.* Juried show of fiction and fantasy, serialism. \$50/3 (sl or CD), 25% commission. Jury: Edward J. Sullivan, Professor of Art History and Dean for the Humanities at New York University. => Jonah Rosen, In Your Dreams: Reveries, Fantasies and Impossible Wishes, The Pen & Brush, 16 E 10th St, NYC 10003-5904. 212-475-3669; [info@penandbrush.org](mailto:info@penandbrush.org); <http://xrl.us/AOM101cm>.

**[N] Media: 2D 3D x(PH). Deadline: Feb 18** Juried show of figures -- nude, partially clothed or clothed, full, ¾ or ½ figure. \$35/2 (CD or DVD).

\$.85k. Jury: Robert Armetta, artist, founder, dir., Long Island Academy of Fine Art. => Mario Tucci, Juried Figure Competition, The Art Guild, 200 Port Washington Blvd, Manhasset NY 11050. 516-384-8181; exhibits@theartguild.org; http://xrl.us/AOM107Aaw.

**[N] Media: All on paper. Deadline: Mar 14** Juried show. \$35/4 (sl or CD/DVD), resume, statement. \$1.9k. Jury: Shelley Langdale, assoc. cur., Prints and Drawings, Phila. Mus. of Art. => Christopher Seiz, Works of Art on Paper 2009, Long Beach Island Fdn of Arts & Sciences, 120 Long Beach Blvd, Loveladies NJ 08008. 609-494-1241; fax -0662; gallery@lbifoundation.org; http://xrl.us/AOM107Ad.

**[N] Media: WM. Deadline: Mar 20 International.** Juried exhibit (acrylics, casein, egg tempera, gouache, inks, transparent and opaque WC) on unvarnished paper. \$35/2 (sl). \$15k. Jury: Jeanne Dobbie, AWS, NWS; Dean Mitchell, AWS, NWS. => Deborah Jones, 28th Annual Adirondacks National, The Arts Guild of Old Forge Inc, 3260 State Route 28, Box 1144, Old Forge NY 13420, USA. 315-369-6411; fax -2431; I info@artscenteroldforge.org; http://xrl.us/AOM107Aj.

**[N] Media: PH. Deadline: Mar 20 ~ International.** Online juried contest of work showing horses, 7 categories: performance, horse and humans, head study, horse at liberty, extreme action, B&W and details. \$15/1 (online as jpg only), entry form. Ribbons, etc. Jury: Carien Schippers, equine photographer; et al. => Equine Ideal: Spring 2008, Equine Photographers Network, White Hill Rd, Walton NY 13856, USA. 607-865-5215; info@equinephotocontest.com; http://xrl.us/AOM96ak.

**The Village Artisans Collaborative** is sponsoring an arts festival to be held Saturday, **April 25, 2009**, 10am - 4pm at the Masonic Hall, downtown North Attleboro. The space size is 8x6 and cost is as follows: non-member \$40, members \$20. Paper work must be on file to qualify for the membership price. See separate attachments for membership and festival applications.

**The Garden Club of Norfolk** is looking for artist who would like to participate in and *Art in Bloom* exhibit at the Norfolk Library on **May 8th and**

**9th.** The event will feature an interpretation of your artwork in a flower arrangement. The art work does not have to be floral in concept and all mediums of work will be accepted. If interested please call or email: Brenda Zolli Phone: 508-520-0203 Email: brendazolli@comcast.net.

**Hawthorn Suites. Deadline: Open** The FAA has an exclusive partnership with the Hawthorn Suites to hang artwork in their first floor lobby and eating area. Each artist that signs up would need about 12 paintings to be placed on fixed hooks. The art is changed every three months. Slots are now being filled for the 2010 calendar year. You can sign up with another artist if you want to share the space. Anyone interested please contact Lisa G. Bailey at 508-553-9119 or e-mail at lgb@lisagbailey.com

**Norfolk Cultural Council. Deadline: Open** Seeking artists interested in one, or multiperson shows to be held at the Norfolk Library. Contact Jan Conklin at (508) 528-8485 or janyceconklin@comcast.net.

**Media: All. Deadline: Open New England (6 states).** Possible future exhibition and/or collection opportunities. No fee/20 (sl, high-quality color photocopies or CD-PC or .mov or quicktime), résumé, statement, etc. => Rachel Rosenfield Lafo, DeCordova Museum and Sculpture Park, 51 Sandy Pond Rd, Lincoln MA 01773. 781-259-8355; fax -3650; http://xrl.us/AOM76AU curatorial-fellow@decordova.org

**[N] Media: PH DL. Deadline: Open** Show work in exhibit spaces. No fee/20 (sl or CD-Mac), checklist, résumé, statement, proposal, etc. => Exhibitions Review Ctte, CEPA Gallery, 617 Main St Ste 201, Buffalo NY 14203. 716-856-2717; info@cepagallery.com; http://xrl.us/AOM91L.

**[N] Media: All. Deadline: Open** Exhibition and or slide registry, all proposals automatically included in registry. No fee/20 (sl), letter of intent, résumé, statement. => Visual Arts Curator, Artist Submission / Slide Registry, Jamaica Ctr. for Arts & Learning, 161-04 Jamaica Av, Jamaica NY 11432. 718-658-7400x132; info@jcal.org; http://xrl.us/AOM91u.

**Media: 2D 3D. Deadline: Open International.** Shows for 08-09, esp. work focusing on multicult-

turalism, Hispanic culture, community-related topics. No fee/10-20, cover letter, statement, résumé. Reception, announcements, speaking opp., etc. => Artists' Submissions, Adams Art Gallery, 600 Central Av, Dunkirk NY 14048, USA. 716-366-7450; accesstoartsubmissions@gmail.com; <http://xrl.us/AOM92L> (artists' submissions).



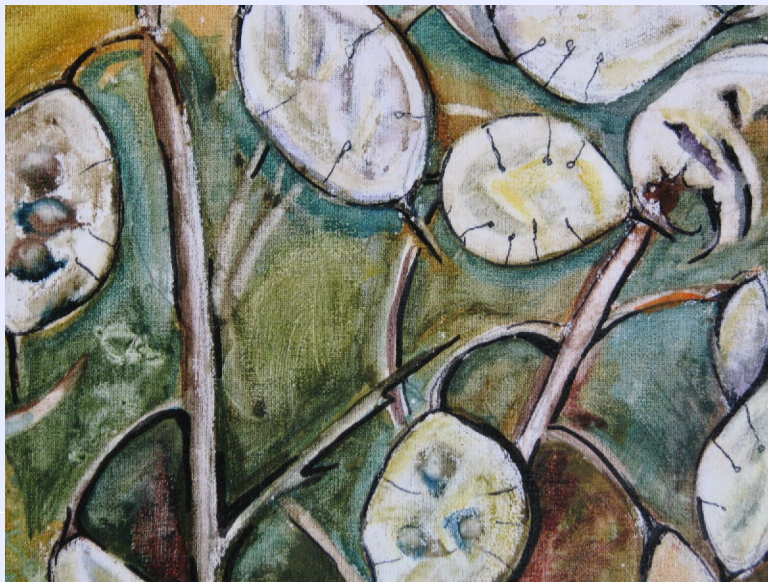
## Members' News

**Sue Sheridan** has been invited to exhibit in the *Holiday Show* at Premiere Image Gallery in Ashland along with 5 other artists, including Bill Ternes, Carol Rafferty, and Ray Andreotti. The show runs December through February.

**Karole Nicholson** will be the featured artist in the Community Gallery of the Attleboro Arts Museum [www.attleboroartsmuseum.org](http://www.attleboroartsmuseum.org) for the month of February. She will be exhibiting landscapes depicting local depicting scenes as well as the Tuscan landscape and floral pastels inspired by her backyard garden. (Above right *Yellow Day Lily*)

**Shelly Engstrom** had a painting published in the January/February edition of *Artscope*, [www.artscopemagazine.com](http://www.artscopemagazine.com) a fine art magazine showcasing the work of artists from the northeast. (These are available free at local businesses including Artbeat in Franklin.)

**Shelly Eager** is showing her work through Feb. 15 at the Blackstone River Theater in Cumberland RI. For the month of March she will be showing her work at the First Universalist Society of Franklin Church.



**Sarah Alexander** will be exhibiting her paintings at The Natick Organic Farm as part of an ongoing group exhibit starting Jan 20. In addition she will also be having a solo show titled *Weeds & Seeds Cont.* at Broadmoor Wildlife Sanctuary 280 Eliot St, Natick for the month of February, opening reception Feb 22 from 1-4pm. (Right: Post card invitation to *Weeds & Seeds Cont.*)

**Gail Eckberg & Sarah Alexander** will be exhibiting at the Center for Arts in Natick, TCAN, 14 Summer Street, Natick, February 4-March 3, 2009. Reception February 5, from 6-8 PM, refreshments served. Come and meet the artists, celebrating

Wellesley Society of Artists' 75th year. In addition **Gail** and **Lisa Bailey** have watercolors exhibited with the Artist Member Exhibit at Rhode Island Watercolor Society, Pawtucket, R.I., until February 12, 2009 during regular gallery hours.

**Bill Noble** had an oil painting accepted by the Falmouth Artist Guild for their January Show at the Cape Cod Cultural Center in Yarmouth.

## Members' News Cont...

**Karole Nicholson** recently launched her new web site featuring a display of landscape, floral and still life pastel paintings, [www.karolenicholson.com](http://www.karolenicholson.com). Since returning from a two week journey to Peru in 2007 as part of an Art Ambassador Project, Nicholson has devoted her energy toward understanding and interpreting the landscape while simultaneously exploring various techniques in rendering still life scenes and garden flowers. The site is a presentation of her recent work in these areas.



She welcomes comments and inquiries via her contact information on the site. (Above right - Karole Nicholson, at Gallery Opening Lima, Peru)

**Dick Cook** has an exhibit of 20 award-winning photographic shots from India and other countries is currently on exhibit through March 2009 in the lobby of Hawthorne Suites, Upper Union Street in Franklin. Please visit at your leisure.

## Winter Workshop

The Franklin Art Association winter workshop will be held on Saturday, February 28<sup>th</sup>. It will be devoted to pastel painting and will be led by our own, very talented pastelist, Shelly Eager. The workshop will take place at the Franklin Mill Store classroom which is located next to the parking lot behind the little white house at the rear of the mill building. The Mill Store itself is located at the “crossing” where the railroad tracks cross Union Street between West Street and Cottage Street.

The workshop will run from 10 AM until 4 PM and will cost each participant \$20.00. Because of space restrictions, the number of participants will have to be limited to 13. A sign-up sheet has already been started and most of the openings have been taken by those who attended the January meeting where the workshop was first announced. If you wish to be added to the participant list contact Paul Peterson at 508-533-7243 or [ppeters03@yahoo.com](mailto:ppeters03@yahoo.com). A waiting list will be started if more than 13 wish to attend. Those who have signed-up and later find that they can no longer attend must contact Paul. This will allow those on the waiting list to participate. Those not showing up and failing to give notice will be charged the fee.

A list of materials to bring to the workshop has been provided by Shelly and will be available at the February meeting. Contact Shelly at 508-528-3616 or [saseng@comcast.net](mailto:saseng@comcast.net) for the list if you cannot attend the February meeting. Shelly will provide some pastels for those of us who want to give pastel painting a try without making an expensive investment. Bring a lunch and something to drink and expect to have a great time and wonderful learning experience.

**FAA Website** The Franklin Art Association would like to encourage members to include their bio information and artwork in the Gallery section of our website [www.franklinart.org/gallery.html](http://www.franklinart.org/gallery.html). To be added to the website please send a two to three paragraph bio with 6 digital images of your work to Lynne Fitzpatrick [lynnef1@verizon.net](mailto:lynnef1@verizon.net). Digital image files should be 100 to 200 dpi .jpg or .gif files. If you have a professional art website Lynne would be happy to include that link as well.

## Workshops/Classes/Events/Opportunities



**The Smile Project** is seeking work for an auction. Paul Molla, co-owner with his wife Christine of Hayward Manor, wonders if any members of the Franklin Art Association would like to donate a piece of art to the Smile Project organization's annual Valentine gala auction on February 14, to be held at Christina's Restaurant on Route 1 in Walpole (behind Stone Forge).

For further information, call F & P Molla Construction at 1-508-528-8548.

**Gail Eckberg** is offering adult education classes through the town of Franklin. Sign up now to take art classes for weekly blocks of time to paint—watercolor, pastel, acrylic, whatever media is your pleasure. Franklin High School, beginning Feb. 9th, from 6:30 to 9:00pm for 10 weeks. Includes individual attention, critiques, hand outs, tips, techniques for all media, material and supply information, more. Do not miss out on these educational, relaxing, social, friendly, and fun, while learning at any art level, experience. Cash /credit card/ check payable to Town of Franklin. Sign up A.S.A.P. at 508 541-2100 X3178 or on-line [lifelong@franklin.k12.ma.us](mailto:lifelong@franklin.k12.ma.us) or [adulted@franklin.k12.ma.us](mailto:adulted@franklin.k12.ma.us)

**Shelly Engstrom** will be offering a workshop Mar. 22 also at the Franklin Mill Store classroom. Sundays from 12-5 (only 3 spaces left!). The cost is \$35 per person. For more information contact her at 508-528-3616.

**Shelly Eager** will be running a workshop at Foxboro Art Association in mid march. For more information call 508-528-3616.

**Sarah Alexander** will be offering classes at the Broadmoor Wildlife Sanctuary in Natick in February and March. For details visit [www.wanderingmindstudio.com](http://www.wanderingmindstudio.com).

**Norfolk Library** is hosting a photography show featuring Robert Thomas and Stacey Saraceni. These two outstanding digital photographers are from Yale New/Haven Connecticut area. Their work is shown many art shows and galleries in New England. If you enjoy photography this is a must see.

**Norfolk Cultural Council's** *Winter Frolic* juried art show will open with a reception February 7th 1-4pm featuring an award presentation, live entertainment and poetry reading by Nancy Tupper who is a published poet from Walpole. This will be an open mic opportunity for all area poets! (See *Call for Entries* section for details about fine art participation.)

**The Rhode Island Watercolor Society** announces its new schedule of adult watercolor classes, including both day and evening classes, beginning in February and March. The Society's classes are designed to provide an introduction to the excitement of watercolor painting for beginning artists while helping the maturing artist further hone their skills. Course registration and tuition payments are due at the Society before the first day of class. You may register by telephone with a major credit card, by mail, or in person at the Society's Gallery, located at the J. C. Potter Casino (Boat House) in Slater Memorial Park, Armistice Boulevard, Pawtucket, RI. Gallery hours are Tuesday through Sat-

urday from 10 AM to 4 PM and Sunday from 1 to 5 PM. The Gallery is a handicapped-accessible facility and is open to the public free of charge. For more information on specific classes, please contact Mary Lou Moore, Gallery Director, at (401) 726-1876 and marylou.moore@cox.net, or visit the Society's web site at [www.riws.org](http://www.riws.org). Classes fill up quickly, so register early!

**Cape Cod Retreat for Artistic Endeavors** Custom built contemporary cape on 1.38 acres includes a 3 bedroom 2 bath home, an attached studio and a roadside gallery. This private sanctuary is set back from the road and abuts conservation land while the free-standing post & beam studio offers a high visibility location for any business venture you choose. More Details Contact: Lorraine Casey 160 Route 137 E. Harwich, MA 02645 Office phone: (508) 568 8103 Cell phone: (914) 356 1644



lcasey@todayrealestate.com

**NZ Workshop Tour 2009** Watercolour artist Edwin Rudd will be touring New Zealand conducting his popular one and two day workshops. Workshops incorporate demonstrations by Edwin and one on one instruction. Students will work on simple landscapes, architecture and figures, with an emphasis on the use of saturated color, in a loose and free style. All levels of painting ability are welcome. Edwin will be in touring New Zealand from late March through early May, 2009. To express an interest, book a

workshop or, for further information please email [edwin@edwinrudd.com](mailto:edwin@edwinrudd.com). Dates are filling up. One and two day workshops are usually 6 hours eg. 9am-3pm, and evening classes are 3 hours, 6pm-9pm. Class sizes to approx 10 – 12 Materials lists will be supplied. Fees are as follows; 1 day workshop \$500, 2 day workshop \$900, Evening series (min of 2 evenings) \$300 each night. (Left: *Autumn Colours*)

## FAA Tax Status~

I am delighted to tell you that the FAA has finally received it's 501c3 status from the IRS! This means that we are now a TAX EXEMPT non-profit, not just a non-profit. What does that mean to you? Well, it means that any purchases you make on behalf of the FAA are tax exempt, as long as you can give the store clerk our tax exempt number (coming soon!). It also means that any donations made to the FAA are tax deductible for the contributor, which is very important if we are to receive additional corporate donations for our shows like we did from EMC, Ben Franklin Bank, etc in the fall. This status also opens up additional possibilities for grant funding and other support. ~Stacey David

## Needed! Content Coordinator

A FAA member volunteer with internet/digital savvy and proficient writing skills to assist Lynne Fitzpatrick in updating and maintaining the content on the Franklin Art Association Website. If interested in helping out please contact Lynne at [lynnef1@verizon.net](mailto:lynnef1@verizon.net) or Hannah Close, the Corresponding Secretary at [FAAsecretary@gmail.com](mailto:FAAsecretary@gmail.com). We thank you in advance for volunteering your precious time!

**Editor's Note:** As always, we depend on you, our members, to provide information for your newsletter. So I thank you in advance for providing information concerning coming events, exhibitions, shows, and etc. ~Hannah Close

