



Franklin Art Association

279 East Central Street, PMB #289, Franklin, MA 02038 www.franklinart.org

Volume 35, Number 2

October 2008

Officers

President

Stacey David

(508) 440-5299

staceydavid@yahoo.com

Vice President

Catherine Rogozyn

(508) 883-5808

crogozyn@yahoo.com

Secretary

William Wallhauser

(508) 528-4157

bwallhauser@kta.com

Treasurer/Membership

Carol Frieswick

(508) 234-6697

BAF@meganet.net

Corresponding Secretary

Hannah Close

(860) 204-2796

FAAsecretary@gmail.com

Committees

Scholarship

Joan Callahan

Workshops

Paul Peterson

Fall Exhibition

Paul & Tina Guarino

Archives

Karen Pendleton

Publicity

Anne McNevin

Refreshments

Bernie McNichols

Website

Lynne Fitzpatrick

Happy Fall!

I hope everyone is enjoying the cooler weather—soon we'll have some spectacular fall leaves that will beg for everyone's artistic interpretation!

This has been a busy month for the FAA...per my announcement at the Sept. meeting, I would like everyone to consider changing the name of the association to something more geographically encompassing. We currently have approx. 100 members, and over 60% are not even from Franklin! We will take a vote at the Oct meeting as to whether we want to change our name. If that passes, we will then open the floor to suggestions and vote at the Nov. meeting on the new name itself. Please consider, and share your thoughts.

In Fall Show news...Tina & Paul Guarino have been doing a fabulous job as Chairs. We have secured 5 Gold Sponsors (\$1,000+ donation each!), 1 Silver Sponsor (\$500+ donation) and 1 Bronze Sponsor (\$350+ donation) to date! We also have a group of volunteers approaching local businesses for additional small contributions. This group has received some cash and a number of gift certificates. I'm also counting on all of you to bring in some Friends of the FAA donations (more info later in the newsletter)—if everyone in the organization brings in \$20 worth of donations, we'll have an extra \$2,000 for our show budget. And we need it, as costs for the panels, etc. have increased this year, and we are also doing more advertising and marketing to get people in the door.

As a reminder, if you haven't yet paid your annual dues, this is the last newsletter you will receive until we get your check. In addition, your dues must be paid up to exhibit in the Fall Show. Please mail in your membership form and check, or bring to the Oct. meeting.

We have a spectacular demonstrator for Oct. and I look forward to seeing you all at the meeting!

Happy Painting,
Stacey David
President

Meetings take place at the Franklin Senior Center, 10 Daniel McCahill St., Franklin, MA, across from St. Mary's church, from 6:30pm to approximately 9pm, the first Thursday of every month September through June.

Refreshments and socializing are held from 6:30pm to 7:00pm, followed by a short business meeting. A demonstration/lecture or workshop activity follows. Our meetings are open to the public and all are invited to attend.

Members' News

Shelly Eager has a piece showing at the Zullo Gallery in Medfield, MA. The show opening will be at 7pm on September 27th. <http://www.zullogallery.org/>

Lisa G. Bailey received a purchase prize award at the *Hopedale Day in the Park* art exhibit, for her oil *First Snow* that was purchased by the Karl A. Bright Insurance Agency. She also received second place for her oil *Raging Storm* at the same exhibit.

Sarah Alexander, Lisa Bailey, and Gail Eckberg are exhibiting in Hopkinton's Cultural Arts Alliance *Juried Exhibit* on display until October 16.

Susan Sheridan, Rick Cardoza, Ray Andreotti and Penny Jackim will be participating in a 4 person show at Nov. 2 - 20. Opening reception is on Sunday, Nov. 2, 1 - 5pm at the RIWS gallery. For more info www.riws.org



ART Exhibit & Sale

Fall Into Art Festival
Hayward Manor • 195 Main Street • Franklin, MA
Nov. 8th & 9th, 2008
Saturday 11-5 p.m. & Gala 6-9 p.m.
Sunday 10-4 p.m.

Join us at the Gala for fine food, beautiful music & award-winning art!

Since 1971, the Franklin Art Association has been dedicated to promoting and educating artists in the Franklin metro area. Today, our 100 member artists exhibit some of the finest local talent in watercolor.

Presented by Franklin Art Association
Hosted by Christine & Paul Molla, Hayward Manor LLC

Visit our Festival, and see what we have to offer!

Fall Show Update

The fall show will be held the weekend of November 8th at Hayward Manor opposite Franklin Common. This will be a member's only show. Paul & Tina Guarino are still looking for volunteers for several committees if you can share some of your time please contact them at pauljm1@comcast.net & guarino@franklin.k12.ma.us. In addition the fall show committee is also looking for 10 pieces of work to include Scholarship raffle. If you have any work to donate please contact Paul, Tina or the officers.

Please remember to bring your 5x7" for the silent auction to the October meeting!!



All FAA members are asked to contribute finger food to the Fall Show Event. Adele Corrigan will be coordinating this committee and asks that members contact her (at624@comcast.net , (508) 695-0739) so she can compile a list of food donations that will be provided and fill in where needed.

Calendar of Events

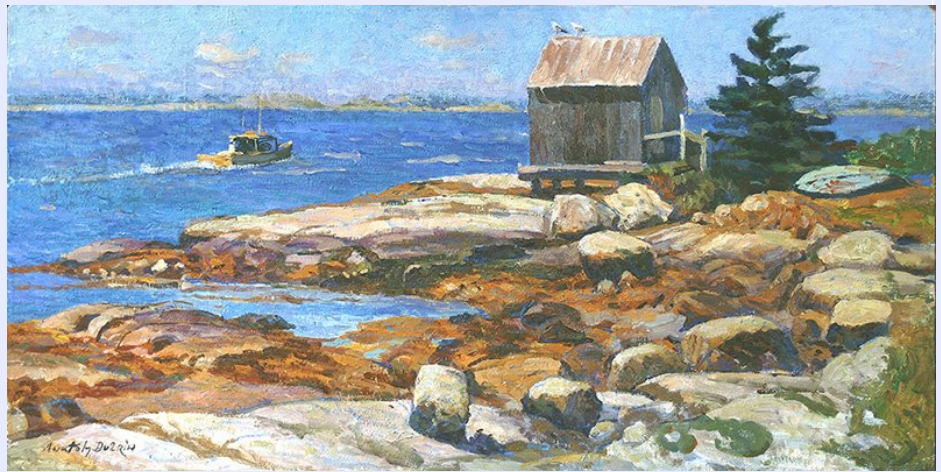
October 2

During the month of October we are honored to present a demonstration by **Anatoly Dverin**. Born in the Ukraine, Anatoly Emigrated to the U.S. in 1980 after earning a BA and MFA from the *Kharkov Fine Art Institute*. He now lives in Plainville, MA where he has become well known for his colorful impressionistic imagery which are reflective of his youth in the Ukraine. Anatoly Dverin is particularly known for his landscape scenes, including the one seen to the right entitled *Fishing Village*. (Above: *Still Life with a Peach*) <http://www.4anatoly.com>



November 6

The Franklin Art Association is please to announce that for the November meeting **Robert Douglas Hunter** will be sharing his many years of painting experience with our members. <http://www.askart.com/askart/artist.aspx?artist=67540>



December Winter Party

Anyone interested in hosting the event is encouraged to contact the officers at FAAsecretary@gmail.com.

Call for Entries

New! Franklin Art Association is now a member of AOM or Art Opportunities Monthly a monthly newsletter posting local and national listings.

www.artopportunitiesmonthly.com This newsletter will include a sampling of local opportunities, for the complete listings please consult the link above.

Media: All. Deadline: Sep 12

Juried show of contemporary work. \$30/4, \$6 ea.addl (sl or CD). Cash, exhibition opportunities. Jury: Asher Miller, dpt of 19th cent, modern and contemp. art, Metropolitan Mus., NY NY. => Laurie Strange, New Directions 08, Barrett Art Center, 55 Noxon St, Poughkeepsie NY 12601. 845-471-2550; info@barrettartcenter.org; <http://xrl.us/AOM101ag>.

Media: All. Deadline: Sep 13 ~

Juried show for women. \$15/1, max 3 (sl or CD), entry form. Jury: Holly Hughes, assoc. cur., Albright-Knox Gallery, Buffalo, NY. => Patricia Broad, Fall Exhibit, Impact Artists' Gallery, 2495 Main St, Tri-Main Bldg, Buffalo NY 14214. 716-835-6817; fax same; impact@buffalo.com.

Media: PR xPH. Deadline: Sep 15

Nor. Amer. artists only. Juried exhibit including monoprint, monotype, books, mixed media, 3D, other print media/techniques. \$40/4 (via callforentry.org). \$10k+ in purchase awards, materials, patron purchases. Jury: Roberta Waddell, cur. of prints, NY Public Libr. => Nor. Amer. Print Biennial, The Boston Printmakers, Emmanuel College, 400 The Fenway, Boston MA 02115. 617-735-9898; mjfa@earthlink.net; <http://xrl.us/AOM101ak>.

Media: All. Deadline: Sep 29 ~

Women only. Juried show on theme. \$50/3 (sl or

CD-Mac). Jury: Morley Safer, CBS news correspondent. => Jonah Rosen, In the News, Pen & Brush, 16 East 10th St, NY NY 10003-5904. 212-475-3669; fax -6018; info@penandbrush.org; <http://xrl.us/AOM97cj>.

N| Media: PA. Deadline: Oct 1

International. Juried show. \$25/3, \$35/4, \$45/5 (sl or CD). \$2.25k. Jury: Rachel Rosenfield Lafo, dir. curatorial affairs, DeCordova Museum and Sculpt. Park. => National Drawing Show, South Shore Art Center, 1119 Ripley Rd, Cohasset MA 02025, USA. 781-383-2787; info@ssa.org; <http://xrl.us/AOM91dp>.

|N| Media: 2D. Deadline: Oct 2

International. Juried show of traditional, conceptual and abstract landscapes. \$25/3, (jpgs online via site only). 3-mo residency. => Surface, Brooklyn Artists Gym, 168 7th St 3rd Fl, Brooklyn NY 11215, USA. 718-858-9069; show@brooklynartistsgym.com; <http://xrl.us/AOM102am>.

N| Media: All. Deadline: Oct 21

Juried show of self-portraits. \$35/3 (CD). Annual winners' showcase. Jury: Tina Kukielski, sr. curatorial assist., Whitney Mus. => Sandra Tyler, Juried Fine Art Annual, Smithtown Township Arts Council, 660 Rte 25A, St James NY 11780. 631-862-6575; artistopportunities@stacarts.org; <http://xrl.us/AOM102dd>.

|N| Media: PA MM PS WC DR GR PH SC xCR. Deadline: Oct 31

Juried show. \$35/6 for 2D or \$35/3 for 3D (CD-PC), apl. Jury: Stina Puotinen, The Whitney Museum, New York, . => Lis Dreizen, Expo 28 Annual Juried Competition, b.j. spoke gallery, 299 Main St, Huntington NY 11743. 631-549-5106; bjspokecompetition@yahoo.com; <http://xrl.us/AOM102aL>.

Media: All. Deadline: Open

New England (6 states). Possible future exhibition and/or collection opportunities. No fee/20 (sl, high-quality color photocopies or CD-PC or .mov or quicktime), résumé, statement, etc. => Rachel Rosenfield Lafo, DeCordova Museum and Sculpture Park, 51 Sandy Pond Rd, Lincoln MA 01773. 781-259-8355; fax -3650; curatorialfelow@decordova.org; <http://xrl.us/AOM76AU>.

|CH| Media: PA DR PR TX CE ME FR GL WO AU etc. Deadline: Nov 30 *International*. Show of work relating to invertebrates -- animals w/o a spine, such as worms, insects and their larva, spiders, jellyfish, crabs, shrimp and sponges and more. No fee/(CD) résumé, etc. => Robyn Holman, Spineless

Wonders: Invertebrates as Inspiration, U. of So. Maine Atrium Gallery, Lewiston-Auburn College, 51 Westminster St, Lewiston ME 04240, USA. 207-753-6554; holman@usm.maine.edu; <http://xrl.us/AOM101dn>.

Hawthorn Suites: The FAA has an exclusive partnership with the Hawthorn Suites to hang artwork in their first floor lobby and eating area. Each artist that signs up would need about 12 paintings to be placed on fixed hooks. The art is changed every three months. We have an opening for the Jan, Feb, March '09 slot as well as the July, Aug. Sept. '09 slot and Oct, Nov. Dec. '09 slot. You can sign up with another artist if you want to share the space. Anyone interested please contact Lisa G. Bailey at 508-553-9119 or by e-mail at lgb@lisagbailey.com.

Norfolk Cultural Council is seeking artists interested in one, or multiperson shows to be held at the Norfolk Library. Contact Jan Cocklin at (508) 528-8485 or janyceconklin@comcast.net.

Hopkinton Creative Arts Alliance Holiday Boutique The CAA will be holding their annual Holiday Boutique on November 7, 8 and 9, 2008. We are looking for local artisans interested in selling their handcrafted items at the boutique. Please send a digital image of your work along with pricing information to our jurying committee at info@caahopkinton.org.

Autumn Arts Festival in North Attleboro, MA will be October 5th between 10am – 4pm. Applications for art booths will be accepted until September 20th, booths are \$40 and the festival will be held rain or shine. Contact Cindy O'Brian naarts@comcast.net for more information.

Kulanu program of Jewish Family Service of Metrowest has invited FAA members to sell their paintings on Dec. 15 at their *Mom's Night Out Artsy Shopping Evening*, at the Franklin Senior Center 7- 9pm. Bins and original artwork are acceptable, no commission will be taken. Volunteers are needed for set up. Please contact Stacey David for more information kulanu@jfsmw.org.

Brickbottom Gallery Somerville, MA is holding a nationally juried show; *Mythological Renderings— Interpreting Myths and Legends through Art* Deadline November 2, 2008. Runs Jan. 22 - Feb. 21, 2009. Visit http://brickbottomartists.com/juried_show to download the Application email Baguette@BrickbottomArtists.com. 70/30 sales split. \$35 entries for 3 pieces, \$5 each additional.

Workshops/Classes/Events/Opportunities

Lisa G. Bailey would like to announce the launch of my website www.LisaGBailey.com. If anyone is interested in my art classes in any media (except pastels) click on "Developing Artists" for all the information and details. They are available all year, and you can join at any time. Contact her by phone 508-553-9119 or e-mail lgb@lisagbailey.com.

The Franklin Cultural Council is seeking new members. You must be a resident of Franklin and be available to meet on the 2nd Monday of the month at 7 pm Sept. - June at the Franklin Municipal Building. The Council is responsible for reviewing grants from local cultural groups and awarding funding to support cultural events in Franklin. The Franklin Art Association has been a recipient of funding for many years. If you are interested in becoming a member of the Council, please contact Sue Sheridan at (508) 533-1917.

Plein Air Workshop any media, will be held at Choate Park, Rte. #109, Medway, Sat. Oct. 4, from 9-1 PM. Fee: \$23., payable to Gail Eckberg, art teacher. Bring whatever medium materials you will need, plus optional easel, stool/chair, lunch/drinking water, comfortable clothes/shoes. FMI and to register call: (508) 528-1280 or email geckberg@aol.com

Life drawing/painting sessions sponsored by the Rhode Island Watercolor Society (RIWS) will begin the first Tue. in Oct. For 6 consecutive weeks beginning October 7 from 7-9 pm. These are nude full figure sessions. The agreement with the RIWS requires a minimum of ten artists to commit to four weeks in advance as opposed to the old system of just nightly drop ins. Otherwise the gallery director will not allow the sessions to start up. A payment of \$40 will be due at the first session, this translates to \$10/session (two free). 13 of 20 slots have already been filled. vailjv@aol.com

FAA Painting Workshop

Taught by Bill Turner, a signature member of the American Watercolor Society, will be held on Nov. 18, 10 to 4pm at Rocky Wood Reservoir in Medfield. Cost will be \$35, BYO lunch. Contact FAAsecretary@gmail.com to sign up

Content Coordinator

Wanted: A FAA member volunteer with internet/digital savvy and proficient writing skills to assist Lynne Fitzpatrick in updating and maintaining the content on the Franklin Art Association Website. If interested in helping out please contact Lynne at lynnef1@verizon.net or Hannah Close, the Corresponding Secretary at FAAsecretary@gmail.com. We thank you in advance for volunteering your precious time!

FAA Website

The Franklin Art Association would like to encourage members to include their bio information and artwork in the Gallery section of our website www.franklinart.org/gallery.html. To be added to the website please send a two to three paragraph bio with 6 digital images of your work to Lynne Fitzpatrick lynnef1@verizon.net. Digital image files should be 100 to 200 dpi .jpg or .gif files. If you have a professional art website Lynne would be happy to include that link as well. If you are looking to become more versatile with digital files consider attending Charles Estabrooks Workshop at the Rhode Island Watercolor Society's workshop on the topic. www.riws.org/index.html

In addition the officers would like to post a list of active members and links to their professional art websites on the FAA website. If you do not feel comfortable having your name listed as a member of the Franklin Art Association, please contact the Corresponding Secretary at FAAsecretary@gmail.com.

Editor's Note: As always, we depend on you, our members, to provide information for your newsletter. So I thank you in advance for providing information concerning coming events, exhibitions, shows, and etc. ~Hannah Close



Franklin Art Association

279 East Central Street, PMB #289, Franklin, MA 02038
www.franklinart.org

Dear Friend,

Would you like to support the Arts in Metrowest? If so, we would greatly appreciate your tax-deductible contribution in support of the Franklin Art Association's upcoming *Fall into Art Festival*, which will be held November 8-9, 2008.

Established in 1971, the Franklin Art Association has 100 member artists from 30 towns, including Franklin, Norfolk, Medway, Milford, Attleboro, Wrentham, Walpole, Medfield, and more, from Metrowest MA and northern RI. We are a non-profit organization dedicated to promoting fine art painting, photography and sculpture, while providing ongoing educational opportunities to our artists through live demonstrations and hands-on workshops. We also offer scholarships to graduating high school seniors, and supply a venue for them to show their work.

Our *Fall into Art Festival* is a members-only, judged exhibition that will showcase some of the finest local artists around. New this year is our corporate-sponsored Saturday evening Gala event. We are thrilled that members of the Newton Symphony Orchestra will be performing, and that restaurant 3 and caterer Dessert Works are contributing gourmet treats to tempt your palate. We hope to see you at our Gala, which is free and open to the public.

Unfortunately, our show costs have increased this year, so we are asking local businesses and individuals to help sponsor the exhibition. Please consider becoming a *Friend of the FAA*. Any donation amount helps! Anyone contributing \$1 - \$100 will have their name listed in our show program and on our website as a Friend of the FAA. Those businesses who donate \$100 - \$250 will have their logo listed in a special section of the program and a logo on the FAA website. Those very generous companies who donate over \$250 will have a logo in the program, a logo on our website with a link to their website, a large logo on our sponsorship sign at the Festival, and verbal recognition of their contribution at the Awards Ceremony at our Gala event.

We thank you in advance for supporting local artists in greater Metrowest, and look forward to a successful show this year through the generosity of people like you. For more information, please contact Paul Guarino, Fall Show Chair, at 508-541-4685.

Best regards,
Stacey David
President



Franklin Art Association

279 East Central Street, PMB #289, Franklin, MA 02038 www.franklinart.org

Friends of the FAA

Thank you for your donation to the Franklin Art Association's *Fall into Art Festival* on November 8-9, 2008. We appreciate your generosity and are grateful for your contribution. The Franklin Art Association is a non-profit organization.

Please mail this form to the attention of Stacey David, President, at the address above. You may keep a copy of this form as a receipt of your tax-deductible contribution. Our Federal Tax ID number is: 51-0184139.

Donated By: _____

Address: _____

Company Phone: _____

Company Website: _____

Contact Name: _____

Contact Phone: _____

Contact Email: _____

Amount enclosed: \$ _____

Please make checks payable to the Franklin Art Association. If you are donating over \$100, please email your logo to staceydavid@yahoo.com.

On behalf of our artists, thank you for your support and generous contribution!



FRANKLIN ART ASSOCIATION

presents their

Fall into Art Festival

Art Show and Sale

hosted by Christine and Paul Molla LLC

SATURDAY, NOVEMBER 8, 2008, 11 A.M. - 5 P.M.

Food, Music & Art Gala, 6 P.M. - 9 P.M.

SUNDAY, NOVEMBER 9, 2008, 10 A.M. - 4 P.M.

Location: Hayward Manor, 195 Main St., Franklin, MA

Eligibility: Open to all **members** of the Franklin Art

Association. Entries must be original, completed in the last two years and not previously exhibited at any FAA shows. Work must be properly framed or gallery wrapped (no clip-on frames or saw tooth hooks), ready for hanging with wire. Pieces must not exceed 24x32 inches, including frame. All work will be examined for these guidelines. Sculpture will not be accepted in this show. The show reserves the right to reject any inappropriate submissions.

Entries: \$20 for up to 2 pieces. Entry Form and check made out to FAA must be mailed to Dorothy Downing, 9 Ascot Lane, Uxbridge, MA 01569, and postmarked no later than **10/27/08**. Identification labels are attached. Please fill them out and send the right half and signed waiver with your entry fee. Attach the left label to your work.

Awards: Awards ceremony will be held Saturday at 6:00 p.m. Awards will be given as follows: Best of Show, People's Choice, and 1st, 2nd and 3rd place plus Honorable Mention in the following six categories: (1) Oil/acrylic; (2) Water media; (3) Pastel/charcoal; (4) Collage/mixed media; (5) Calligraphy/drawing/miscellaneous; and (6) Photography (please note 35mm or digital and if enhanced). There is the possibility of cash awards.

Juror: Judging will be done by a professional artist on an unbiased basis on Saturday morning prior to the show's opening.

Commission: Franklin Art Association will take 30% commission on all art work sold at the show.

Delivery: Drop-off is Friday, November 7, from 4 - 6:45 p.m., with hanging following from 7 - 10 p.m.

Pick-up: Pick-up artwork Sunday between 4 - 5 p.m. at the Hayward Manor.

Bins: Contact Lisa Bailey at 508-553-9119, if you would like a bin. There is room for both traditional bins and Art Cards to be displayed.

Scholarship Raffle: Some donated works by members and demonstrators will be raffled off during the show. Funds from this project go toward support of a \$1,000 high school art scholarship which is awarded annually. Please contact Paul or Tina Guarino if you would like to donate a piece for the raffle.

Silent Auction: Members are encouraged to donate a 5x7" piece for the Silent Auction in advance of the show. Income from the Silent Auction, as well as the commissions, will benefit the general FAA fund to be used for future events, demonstrations, and for exhibit rentals.

Food and Drink: All entrants are asked to bring contributions for the food and drink table. Finger food works best. We hope to have a sponsor for the Saturday evening gala event.

*We encourage all members to participate in this upcoming show.
For further information, contact Paul and Tina Guarino at 508-541-4685.*

Complete and have postmarked by October 27, 2008

Labels: Please print labels clearly. There will be no last minute corrections allowed. Mail entry fee and label no later than October 27. Please address envelope to Dorothy Downing, 9 Ascot Lane, Uxbridge, MA 01569. Make \$20 check payable to FAA and enclose in envelope with labels below.

This first group of labels (on left) should be filled out and attached to your 2 works before you bring them to Haywood Manor for hanging. The second group of labels (on right) should accompany entry fee and signed waiver.

Title _____ Artist _____ Medium _____ Price _____ Size _____ Phone _____	Title _____ Artist _____ Medium _____ Price _____ Size _____ Phone _____
Title _____ Artist _____ Medium _____ Price _____ Size _____ Phone _____	Title _____ Artist _____ Medium _____ Price _____ Size _____ Phone _____

Please read and sign waiver:

The FAA and the Hayward Manor Owners are not responsible for damage to any property before, during and after the Fall 2008 Exhibition and Sale. We will take all precautions to ensure the protection of our members' works.

Signature _____ Date _____